

# Assembly and Operation Instructions

## 512 Series Seat

1. Seat Assembly
  - a. Bottom seat cushion
    - i. The bottom seat cushion has one stud (circled – Figure 1) and two nutserts (circled – Figure 1) on it that are used to mount the bottom cushion to the seat frame (Figure 2).
    - ii. This mounting hardware takes a 13mm wrench or socket.

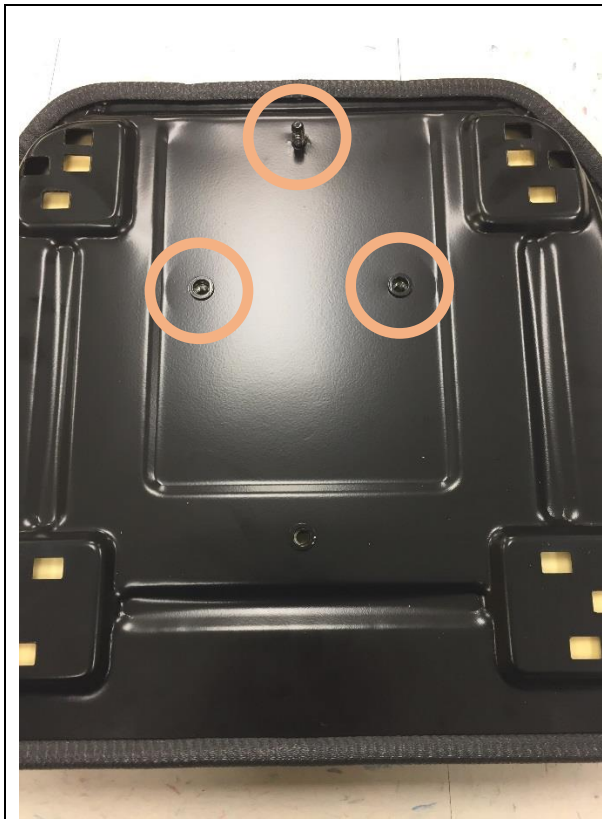


Figure 1

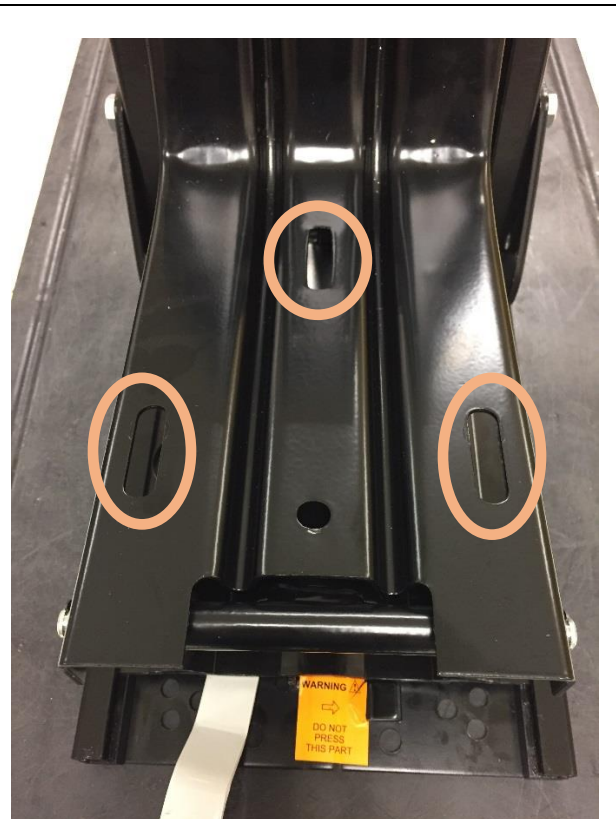


Figure 2

b. Back seat cushion

- i. The back cushion has one slot (circled – Figure 3) and two nutserts (circled – Figure 3) in it that are used to mount the back cushion to the seat frame (Figure 4).
- ii. This mounting hardware takes a 13mm wrench or socket.
- iii. Slide the slot in the seat back onto the tab on the seat frame before installing the mounting screws.



Figure 3



Figure 4

c. Seat frame back cover plate

- i. Slide the top of the back cover plate inside of the top lip of the seat frame (circled – Figure 5).
- ii. There are two screws that hold the bottom corners of the back cover plate to the bottom of the seat frame (circled – Figure 5).



Figure 5

## 2. Seat frame angle adjustment

- a. The seat assembly can be angled back about 14° - useful if your mounting surface is angled forward. Before changing this angle, it is recommended that you first back off on the seat weight adjustment to the lightest setting before changing the seat assembly angle. To change the seat assembly angle, follow the steps listed below (see Figure 6):
  - i. Remove the back cover from the seat frame.
  - ii. Loosen the two frame pivot bolts (one on each side of the frame – 17mm wrench or socket). Do **not** remove the nuts – just loosen them enough to allow the frame parts to pivot.
  - iii. Remove the e-ring on one end of the lower pivot rod.
  - iv. Remove the lower pivot rod.
  - v. Change the seat angle by selecting the other hole for the lower pivot rod.
    1. The rear most pivot hole is for the standard seat assembly angle.
    2. The forward most pivot hole tilts the seat assembly back about 14°.
  - vi. Reinstall the lower pivot rod.
  - vii. Reinstall the e-ring.
  - viii. Tighten both frame pivot bolts.
  - ix. Replace the back cover.



Frame pivot bolt  
E-ring  
Rear pivot hole  
Lower pivot rod  
Forward pivot hole

Figure 6



Figure 7

## 3. Seat Mounting

- a. There are multiple holes and slots in the bottom side of the seat frame bottom plate that can be used for mounting the seat to the equipment (see Figure 7).

#### 4. Seat Operation

- a. To adjust the seat position front-to-back
  - i. Move the lever, that is under the front of the seat, to the left. This will release the position catch and the seat can be slid forwards and backwards. Releasing the lever will allow the lever to catch a latching position to stop the seat from sliding forwards or backwards. There is approximately 6 1/2" of slide travel available.
- b. To adjust the weight range of the seat
  - i. Turn the knob behind the back seat cushion (see Figure 8) clockwise to increase the operator load range (counterclockwise to decrease it). There is a load range guide sticker on the back of the seat frame (see Figure 9) to give you an idea of about where the load range is set to. As a rule of thumb, set the load range to something close to the weight of the operator, try the seat, and readjust a little one way or the other if needed. When set properly, with an operator on the seat, the seat suspension will compress when you run over a bump – providing a smoother ride for the operator than if you did not have any suspension.



Figure 8



Figure 9